



GTZ Clean Energy Activities and NAMAs

Holger Liptow, GTZ

CLEAN Side Event
DIREC 2010





About us

- Mission: promote **international cooperation** which contributes to **sustainable development** - world wide
- **International corporation** (state owned)
- **Clients:** German Government and others
- Turnover: > **1 000 mio €**
- Staff world wide: > **14 000 employees**
- Active in **120 countries**, mainly developing countries.



GTZ Services in Energy

Policy Advice for a sustainable Energy Sector
(Regulation, Policy Planning & Reform Processes, Energy Security)

Renewable Energies (Demonstration, Incentive Systems,
Private Sector Development) to improve :



On-grid
Power Supply



Access to Energy
in Off-grid Areas

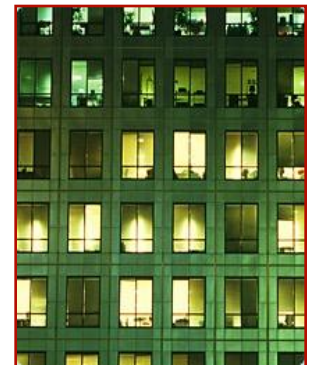
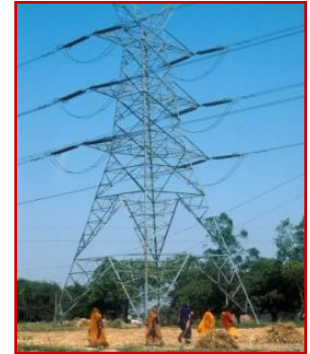
Energy Efficiency for :



Energy Supply
(Power Plants,
Transmission & Distribution, ...)



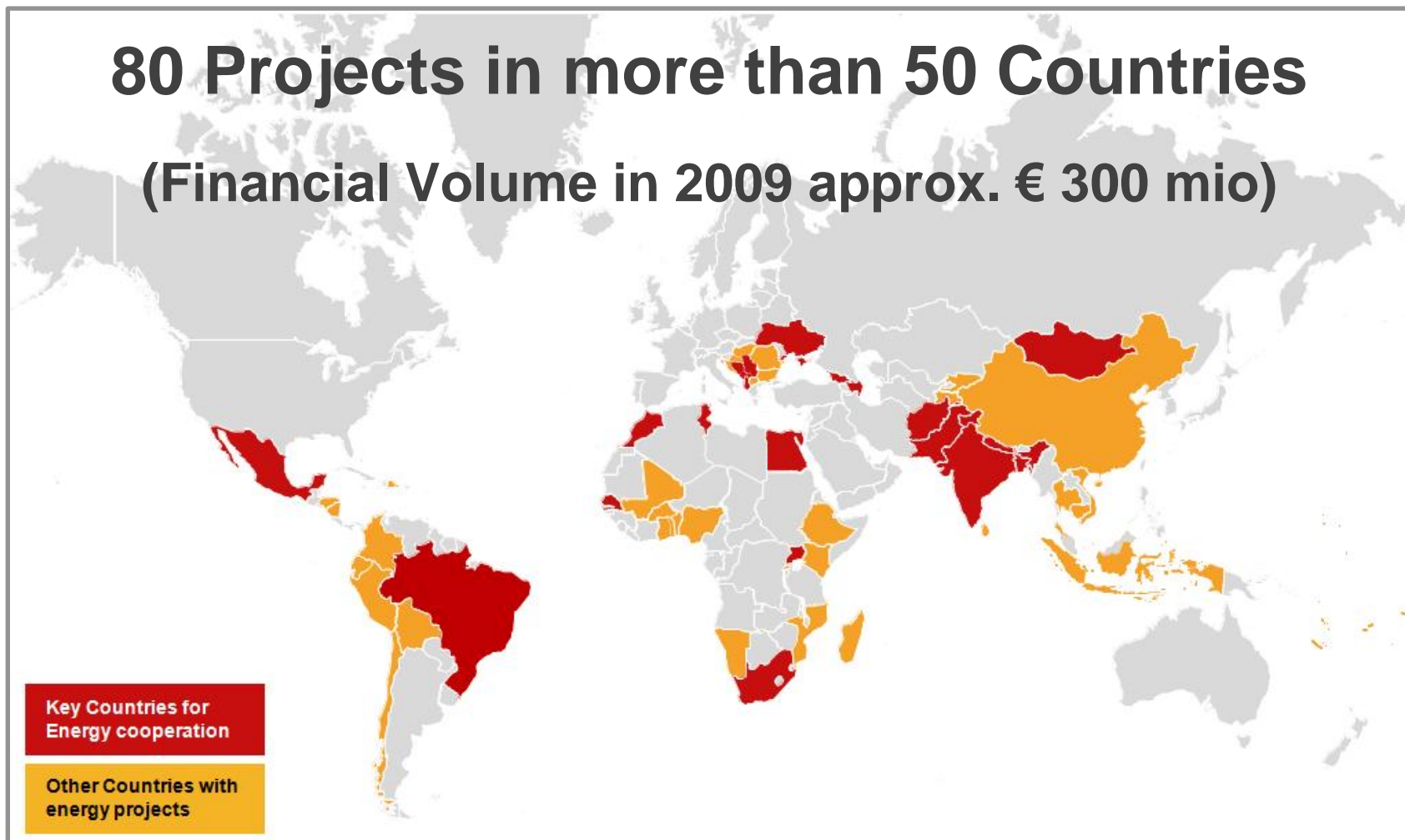
Energy Use
(Building, Industry,
Household, Transport, ...)





GTZ: Partner in the Energy Sector


80 Projects in more than 50 Countries
(Financial Volume in 2009 approx. € 300 mio)





NAMA approach



- GTZ develops its **understanding** of NAMA and MRV 
- Defining **NAMA support** will follow
- Projects under preparation for support NAMAs, LEDS, TNA
- Key for the energy sector:
Integration of NAMA support into existing sector related activities
- GTZ **portfolio of energy projects** indicator for possible NAMA actions.



Possible GTZ involvement in a national NAMA process

Capacity
Development

- **Low emissions development plans**
- **NAMA identification**
- **NAMA planning**
- **NAMA implementation including MRV**



NAMA development office, Indonesia



- **First national institution worldwide**
- **Purpose** to support ‘**bottom-up**’ NAMA development within the country.
- **From the existing National Action plan.**
- **GTZ** support the Indonesian government
- NAMA concept developed including **baseline, BAU, MRV indicators** etc.
- The current focus
 - **industry sector**
 - **urban areas**



GTZ focus in CLEAN activities

- Exploration of **links between NAMAs, TNAs, LEDS, roadmaps**
- Harmonized training programs
- Integrated technology data bases – **Climate tech wiki, OpenEI, reegle**
- **GTZ-Contact:**
Friedel Sehleier, Klaus Wenzel, Holger Liptow





German Side Events at the DIREC



- South-South Cooperation for Renewable Energy Capacity Development and Technology Exchange
28/10, 5:30 pm – 7:00 pm, Room Krishna



- German development policy perspective on Energy Access
28/10, 9 am- 10:30 am, Room Sutley



- Concentrated Solar Power – A potent option for Grid Power
29/10, 9 Am- 12:30 Am, Room Cosi
- and 5 other events



Thank you.

Holger Liptow

Deputy Head Energy and Transport (4413)

Deutsche Gesellschaft für Technische
Zusammenarbeit (GTZ) GmbH

holger.liptow@gtz.de

<http://www.gtz.de>



NAMA issues

- How to define **unilateral, supported and credited?**
- How to operationlising **“Additionality”**?
- What and how can be **MRVed**?
- **Low Emissions Developments Plan** are NAMAs?

